

Add Modbus to ControlLogix with an Add-on Instruction for RSLogix™ 5000 Version 16

Technical Publications
ProSoft Technology[®], May 2008

Abstract

Add Modbus connectivity to ControlLogix platforms in record time while eliminating the chance of typing errors.

Introduction

RSLogix users who have ever set up third party modules, custom code, or proprietary code are familiar with the program's add-on instructions folder. This folder allows third party vendors, panel builders, and systems integrators to create their own code that can be protected for security reasons, or locked to ensure that the code remains unchanged by the user.

ProSoft Technology's inRAX Modbus Communication Module for ControlLogix (MVI56-MCM) is equipped with an add-on instruction to allow integration of the module into RSLogix.

In an effort to make life easier for these users, ProSoft Technology has enhanced the MVI56-MCM module's add-on instruction in a way that will significantly simplify installation. Now users can integrate the module into a new or existing RSLogix 5000 Version 16 project by importing a single file, as opposed to importing each of 16 User Defined Data types and 30 rungs of ladder one-by-one.

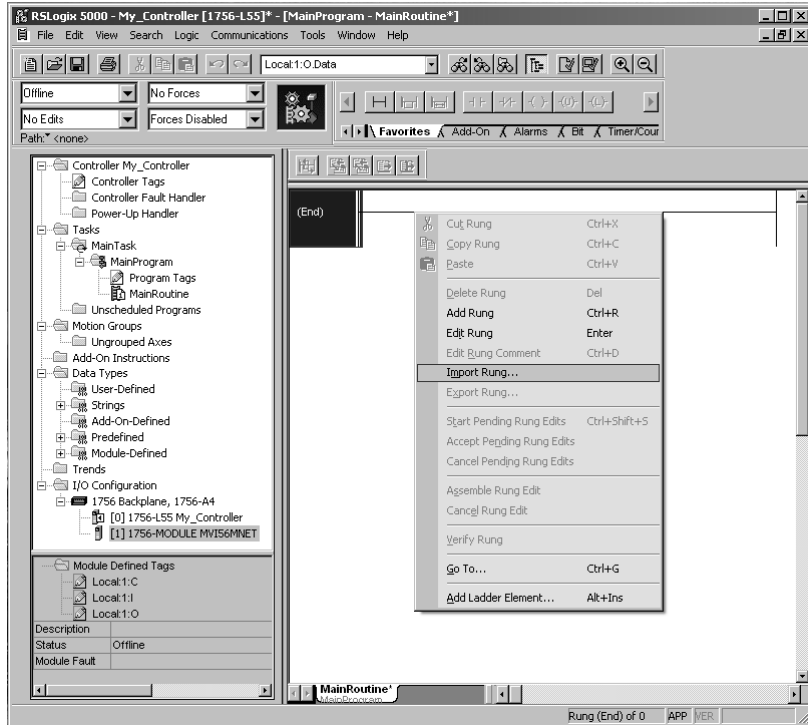
This new feature will enable quicker integration of the product, with fewer chances for typos and ladder errors.



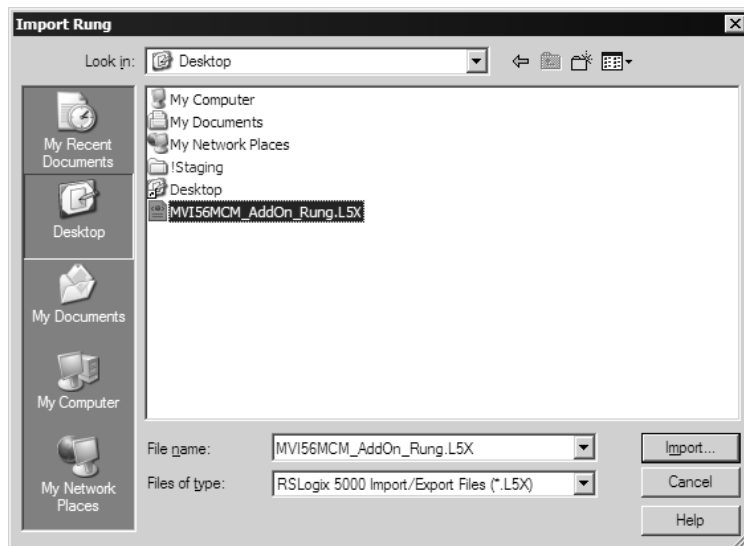
Using the MVI56-MCM Add-on Instruction for RSLogix

- 1 Open your application in RSLogix 5000.
- 2 Expand the Tasks folder, and then expand the Main Task folder.
- 3 On the Main Program folder, click the right mouse button to open a shortcut menu. On the shortcut menu, choose New Routine.
- 4 In the New Routine dialog box, enter the name and description of your routine, and then click OK.

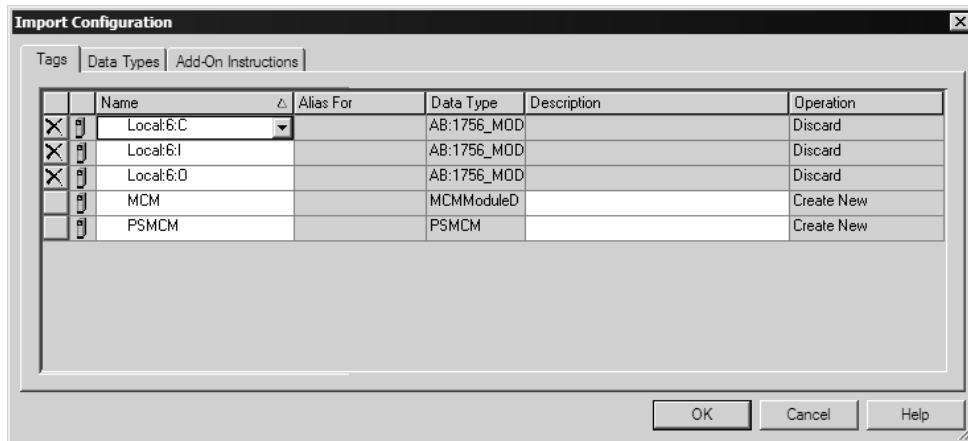
- 5 Select an empty rung in the new routine, and then click the right mouse button to open a shortcut menu. On the shortcut menu, choose "Import Rung...".



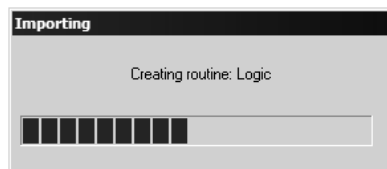
- 6 Select the MVI56MCM_AddOnRung.L5X file



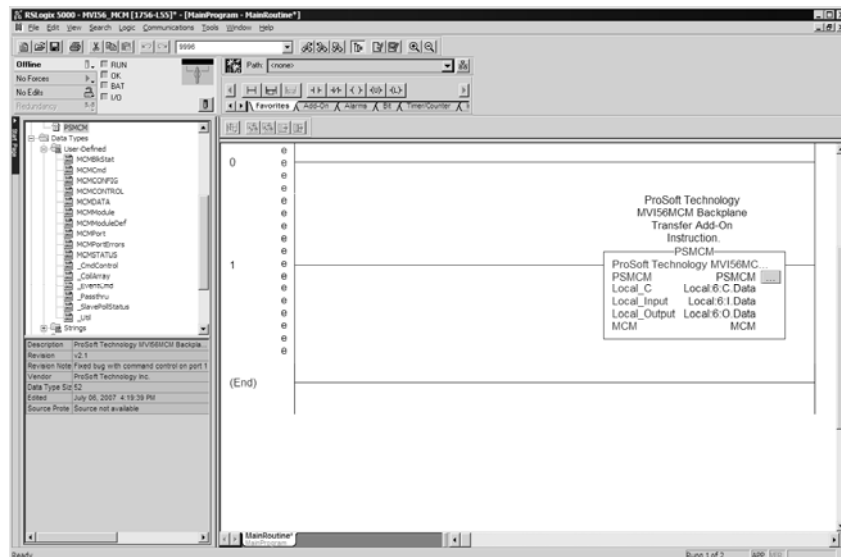
- 7 The following window will be displayed showing the controller tags to be created during the import procedure:



- 8 Click OK to confirm the import. RSLogix will indicate that the import is under progress:



When the import is completed, the new rung with the Add-On instruction will be visible as shown in the following illustration.



The procedure has also imported new user defined data types, data objects and the Add-On instruction to be used in your project.



Benefits

This process for importing the MVI56-MCM configuration files into the RSLogix Add-On Instructions file has replaced the practice of importing 16 user defined data types and 30 rungs of ladder in multiple ladder files.

Because this enhancement allows the user to easily integrate the module without manually copying over each file, human error from typos is nearly eliminated. Additionally, errors that do occur are significantly easier to correct.