



# PROFIBUS DPV1 Master

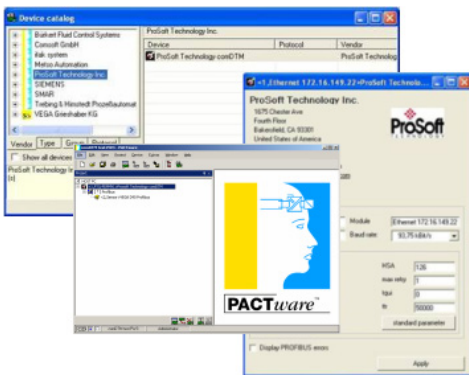
## PSW-cDTM-PDPM

The PROFIBUS DPV1 Master FDT (Field Device Tool) communication DTM (comDTM) software is an interface between any compliant FDT software container, an FDT device DTM and applicable PROFIBUS slave devices.

The FDT PROFIBUS comDTM and a compatible FDT 1.2.1 frame application connect multiple device DTMs to their respective PROFIBUS connected field instruments using the Ethernet port on the PC and PROFIBUS DPV1 master module.

## PROFIBUS DPV1 Master FDT Communications DTM PSW-cDTM-PDPM

*FDT (Field Device Tool) technology standardizes the communication interface between field devices and systems. The key feature is its independence from the communication protocol and the software environment of either the device or the host system. FDT allows any device to be accessed from any host through any protocol.*



## How to Contact Us: Sales and Support

All ProSoft Technology® products are backed with unlimited technical support. Contact our worldwide Technical Support team directly by phone or email:

### Asia Pacific

+603.7724.2080, asiapc@prosoft-technology.com  
Languages spoken include: Chinese, Japanese, English

### Europe - Middle East - Africa

+33 (0) 5.34.36.87.20, support.EMEA@prosoft-technology.com  
Languages spoken include: French, English

### North America

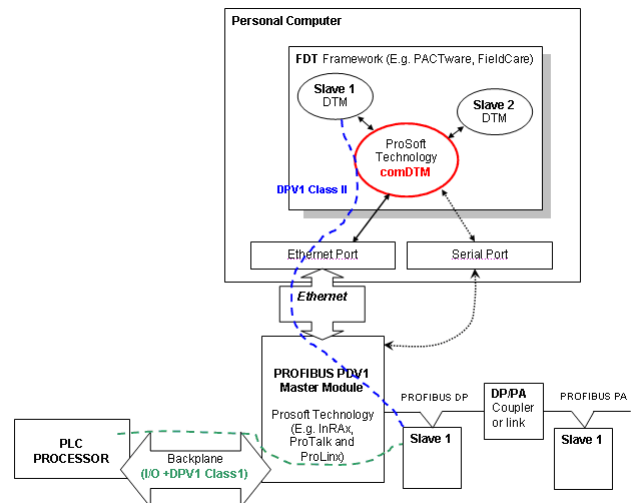
+1.661.716.5100, support@prosoft-technology.com  
Languages spoken include: English, Spanish

### Latin America (Sales only)

+1.281.298.9109, latinam@prosoft-technology.com  
Languages spoken include: Spanish, English

### Brasil

+55-11.5084.5178, eduardo@prosoft-technology.com  
Languages spoken include: Portuguese, English



Typical FDT frame applications are Fieldcare (Endress + Hauser), PACTware (PACTware association) or fdtCONTAINER (MM-Software). The PROFIBUS DPV1 master modules support Class 1 and 2 services thereby allowing for PLC cyclic Class 1 services to co-exist with acyclic comDTM Class 2 services over the same network.

## General Specifications

General specifications for comDTM software include:

- Support for PTQ-PDPMV1 Ethernet port (no serial connectivity)
- Support for MVI56-PDPMV1 COM 2 serial port. Ethernet configuration is also available through the CIPConnect™ feature for the MVI56-PDPMV1 modules (see Note), with the addition of the 1756-ENBT module installed in the same ControlLogix rack.
- FDT 1.2.1 compatible
- Official FDT-JIG certificate

- PROFIBUS-DPV1 master Class II operation (acyclic master/slave services)
- PROFIBUS DPV1 Class II Services:
  - Initiate
  - Read
  - Write
  - Data transport
  - Abort
- Can be used to access Slaves concurrently as the master is scanning (Class I) the network I/O for the PLC
- Supports many FDT containers such as FieldCare and PACTware
- Built-in Ethernet and serial transport communication providers
- Software license provides full support of all configured device DTMs and communication of up to 15 master modules
- Additional Functions performed:
  - Scan list function
  - Set Slave address

**Note:** MVI56-PDPMV1 requires firmware version 1.28.000 or later to support CIPconnect™ ENABLED PC programs (1756-ENBT support). The 1756-ENBT card must be located in the same rack as the MVI56-PDPMV1 (bridging through different racks is not supported). This functionality requires comDTM version 1.0.1.5 with install version 1.01.0003.

## System Requirements

- A ProSoft Technology PROFIBUS DPV1 Master module with available user Ethernet or Serial port
- FDT v1.2.1 Frame program such as FieldCare or PACTware
- Hardware Requirements (Recommended)
  - Pentium 4 with 2 GHz Processor, 256 MB RAM
  - 450 MB disk space (for DTM Libraries)
  - Monitor 1024 X 768, 64k colors
- Software Requirements (Minimum)
  - Windows NT 4.0 Service Pack 6A, Windows 2000 SP3 or Windows XP
  - Microsoft Internet Explorer Version 6.0
  - Microsoft Management Console\*
  - Adobe Acrobat Reader 5.0\*

\*Some FDT Containers require these components

## Additional Products

ProSoft Technology offers a full complement of PROFIBUS DPV1 Master/Slave communication solutions for a variety of ProLinx Communication Gateways and PLC processor platforms:

<b>PTQ-PDPMV1</b>	ProTalk PROFIBUS DPV1 Master
<b>MVI56-PDPMV1</b>	inRAX ControlLogix PROFIBUS DPV1 Master
<b>PCB</b>	ProSoft Configuration Builder. Software required to configure all PROFIBUS DPV1 Masters and slaves.
<b>ProLinx Gateways</b>	Please visit our WEB site for listing of these products. <a href="http://www.prosoft-technology.com">http://www.prosoft-technology.com</a>

Visit our web site or contact ProSoft Technology for a complete and up-to-date list of available ProSoft Technology products.

---

## Ordering Information

To order this product, please use the following:

<b>PSW-cDTM-PDPM</b>	PROFIBUS DPV1 Master FDT Communications DTM
----------------------	--

To place an order, please contact your local ProSoft Technology distributor. For a list of ProSoft distributors near you, go to <http://www.prosoft-technology.com>

### Distributors:

Place your order by email or fax to:

### North American / Latin American / Asia Pacific

[orders@prosoft-technology.com](mailto:orders@prosoft-technology.com),  
fax to +1 661.716.5101

### Europe

[europe@prosoft-technology.com](mailto:europe@prosoft-technology.com),  
fax to +33 (0) 5.61.78.40.52

Copyright © ProSoft Technology, Inc. 2000 - 2008. All Rights Reserved.  
March 06, 2008