



Where

Automation

Connects.

Technical Note

Sample Message Instructions for Processor to Processor Communications using the AN- X2-AB-DHRIO DH Plus Bridge

Document Code: TN130628-001

Author: Tom Lenigan

Date: July 2013



Asia Pacific

Malaysia Office

Phone: +603.7724.2080

asiapc@prosoft-technology.com

Languages spoken: Chinese, English

China Office

Phone: +86.21.5187.7337

asiapc@prosoft-technology.com

Languages spoken: Chinese, English

Europe, Middle East, Africa

France Office

Phone: +33 (0)5.34.36.87.20

europe@prosoft-technology.com

Languages spoken: French, English

Middle East and Africa

Phone: +971.(0)4.214.6911

mea@prosoft-technology.com

Languages spoken: English, Hindi

North America

Corporate Headquarters

Phone: +1 661.716.5100

support@prosoft-technology.com

Languages spoken: English, Spanish

Latin America

Brazil Office

Phone: +55.11.5083.3776

brasil@prosoft-technology.com

Languages spoken: Portuguese, English

Mexico and Central America Office

Phone: +52.222.3.99.6565

soporte@prosoft-technology.com

Languages spoken: Spanish, English

Regional Office

Phone: +1.281.298.9109

latinam@prosoft-technology.com

Languages spoken: Spanish, English

Document Information

Author	Tom Lenigan
Description	Sample Message instructions for Processor to Processor communications
Date	July 2013
Revision	1.01
Product Name	AN-X2-AB-DHRIO
Document Code	TN130628-001

ProSoft Technology

5201 Truxtun Ave., 3rd Floor

Bakersfield, CA 93309

+1 (661) 716-5100

+1 (661) 716-5101 (Fax)

<http://www.prosoft-technology.com>

Copyright © ProSoft Technology Incorporated 2013. All Rights Reserved.

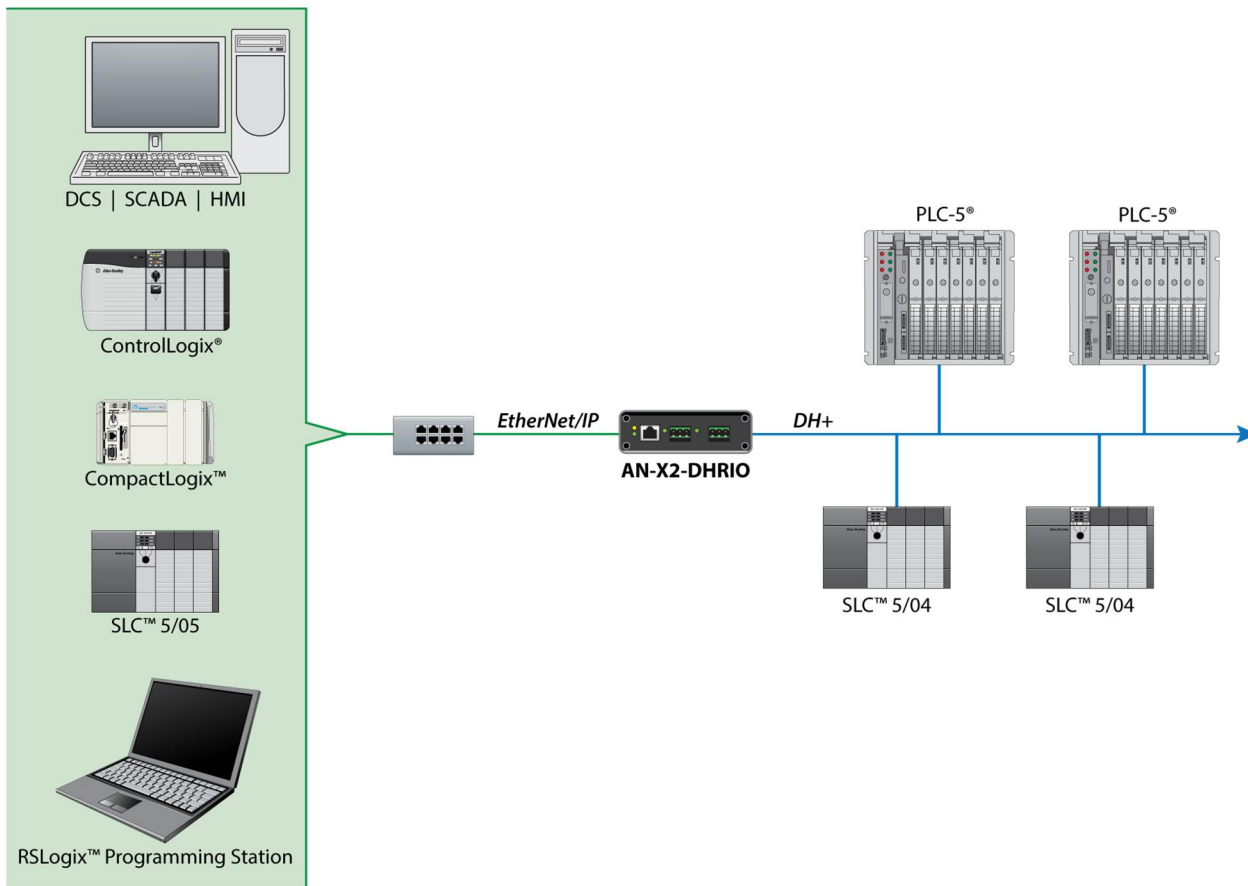
All ProSoft Technology® products are backed with unlimited technical support.

July 15, 2013

ProSoft Technology® is a Registered Trademark of ProSoft Technology, Inc. All other brand or product names are or may be trademarks of, and are used to identify products and services of, their respective owners.

The AN-X2-AB-DHRIO gateway when operating with the AN-X2-DHP firmware selected emulates a ControlLogix Hardware Gateway. This gateway enables Programming Terminals, SCADA, DCS, HMIs, and processors to communicate through the gateway to various legacy processors on the DH+ network.

This TechNote will show samples of Processor to Processor communications via Message instructions, and how to configure the path to the devices on the DH+ network. The DH+ bridge firmware has been designed to take communications from the Ethernet interface and pass them to the devices on the DH+ network. Communications that originate from the DH+ network cannot be routed to devices on the Ethernet network.

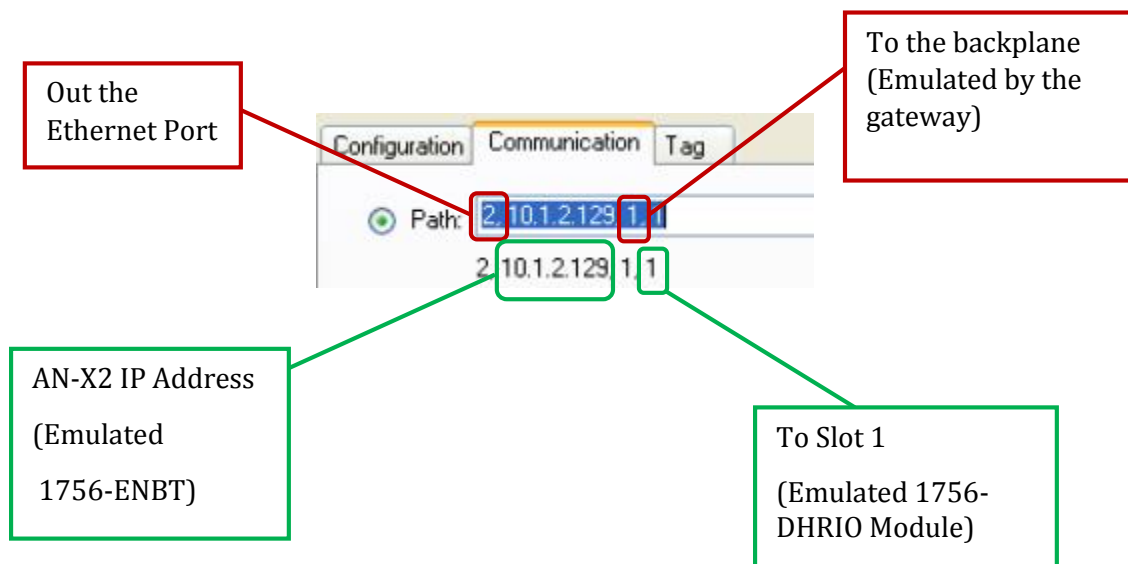


General Message Instruction Information:

- 1) When using CompactLogix™ or ControlLogix® processors:
 - a. It is not possible to configure MSG instructions with binary data types
 - b. It is not necessary to add in the AN-X2 gateway into the I/O tree when using MSG instructions
- 2) The Source and destination tags or data files data types must match
- 3) Cannot be continuously enabled, but must be enabled based upon some trigger condition

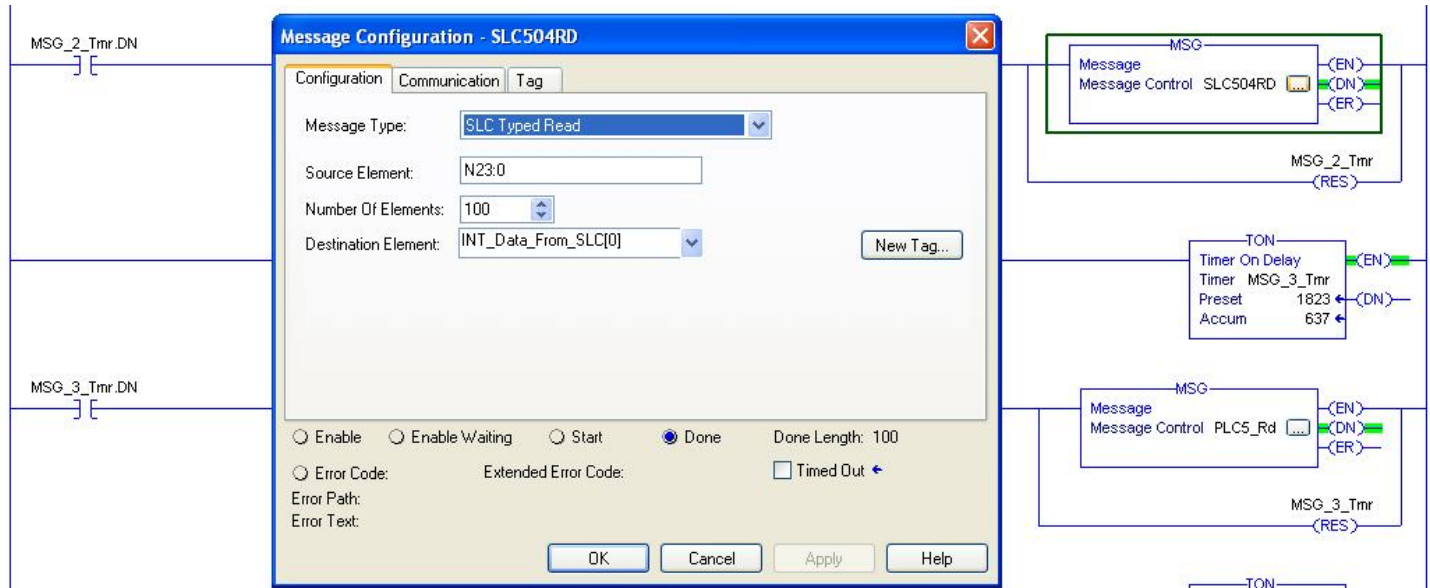
CIP Path Information:

Since the AN-X2 Gateway emulates a 4 slot ControlLogix® Hardware Gateway here is the breakdown of the CIP portion of a CompactLogix™ sample path:

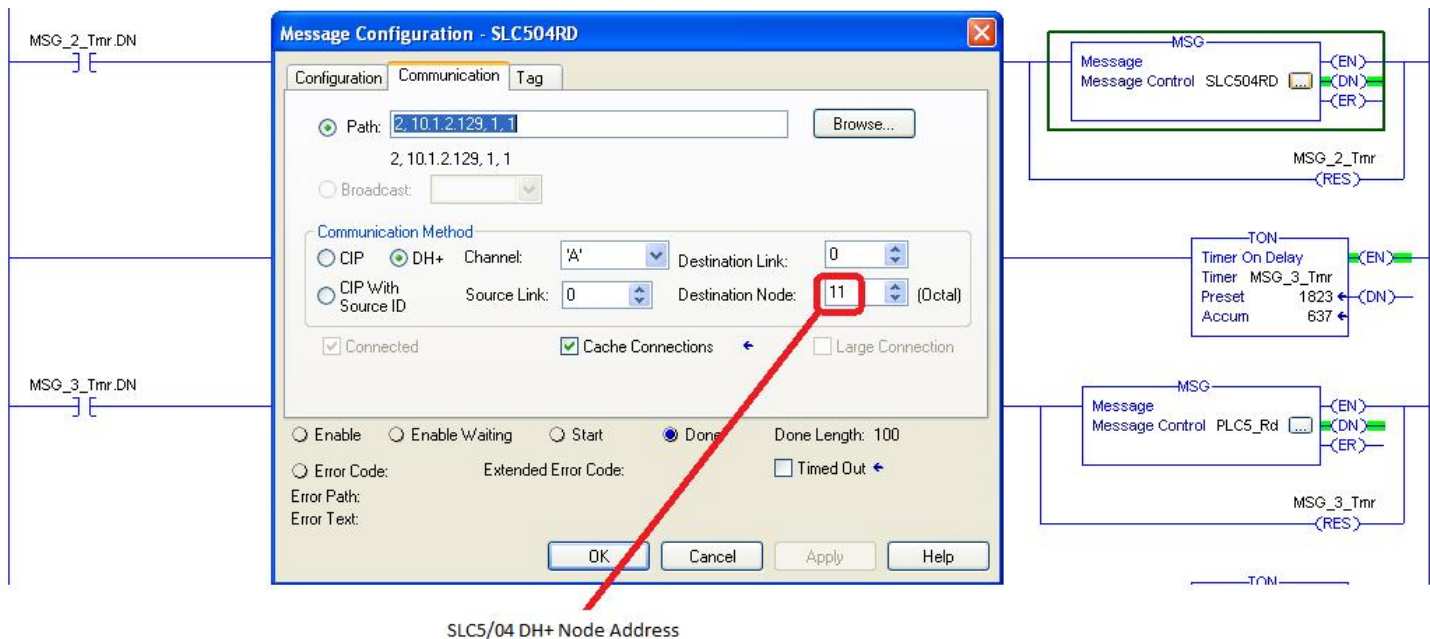


CompactLogix MSG samples to a SLC5/04

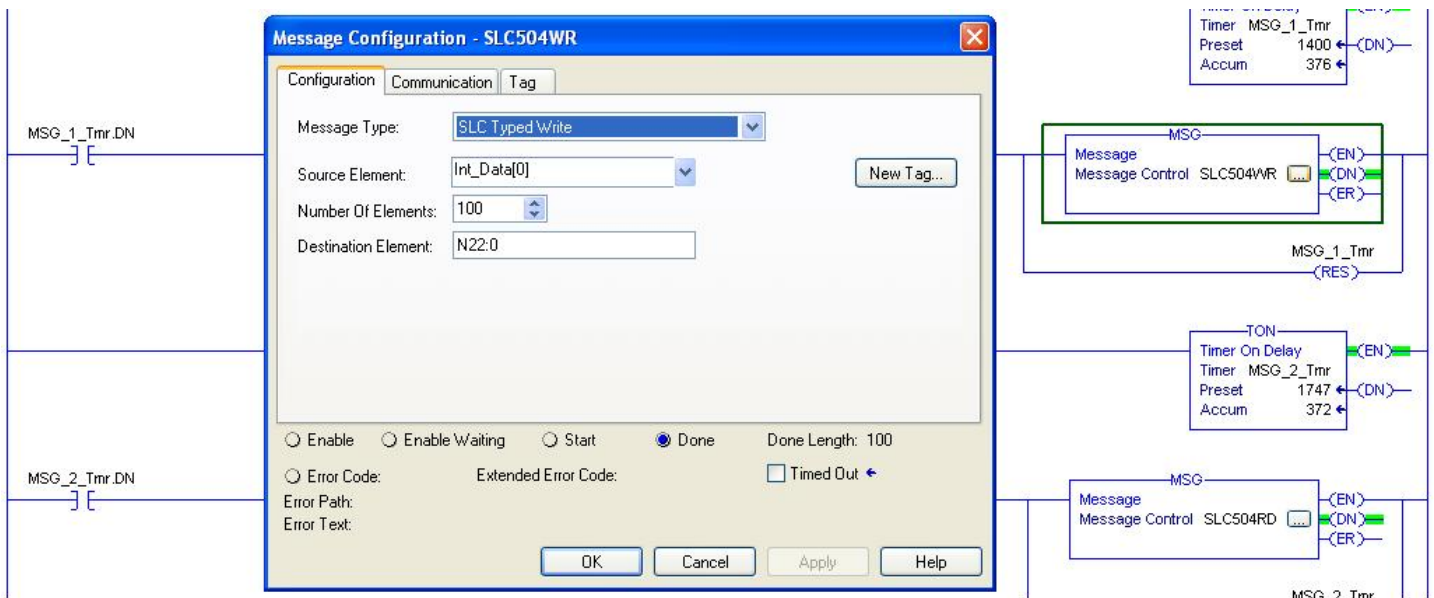
Read



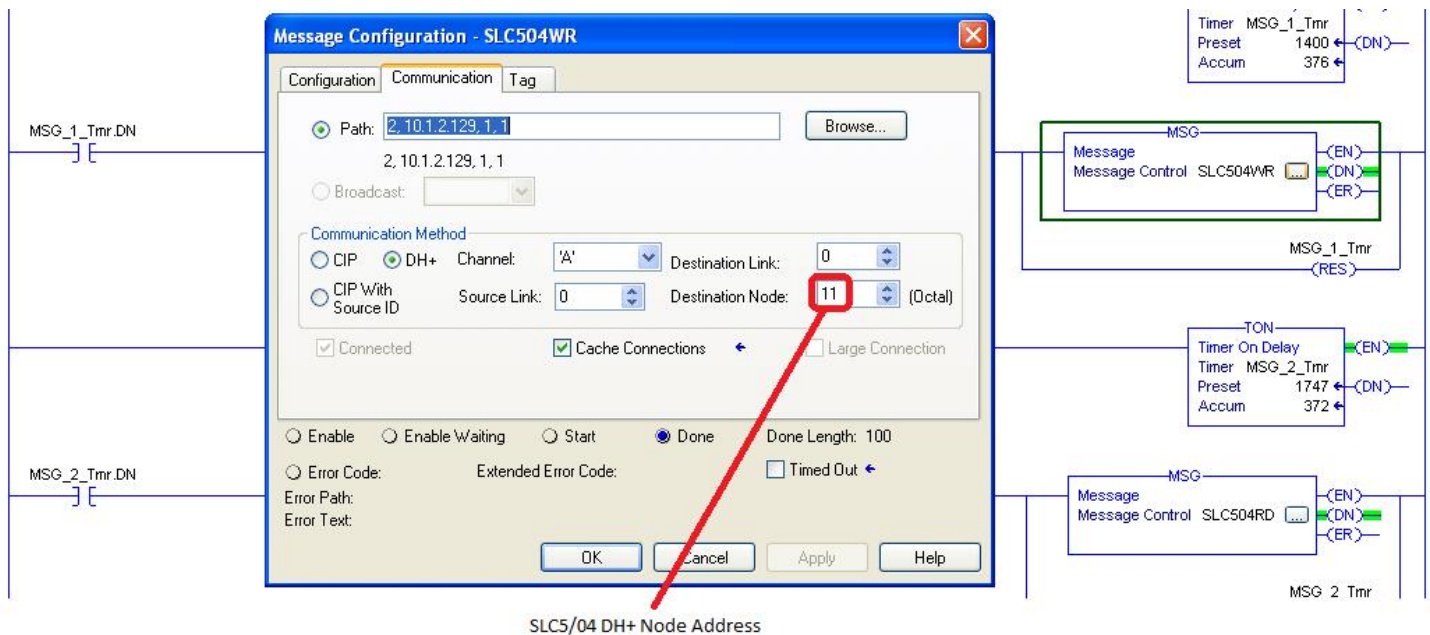
The IP Address listed in the path below is the IP address of the AN-X2 Gateway



Write

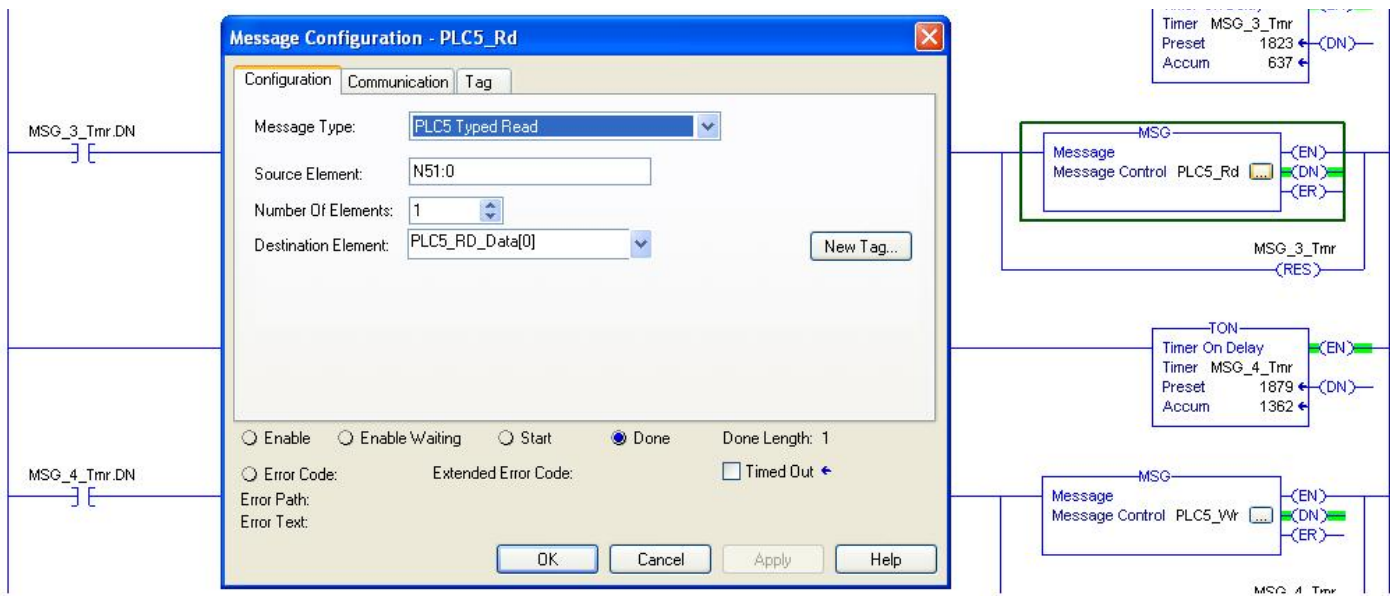


The IP Address listed in the path below is the IP address of the AN-X2 Gateway

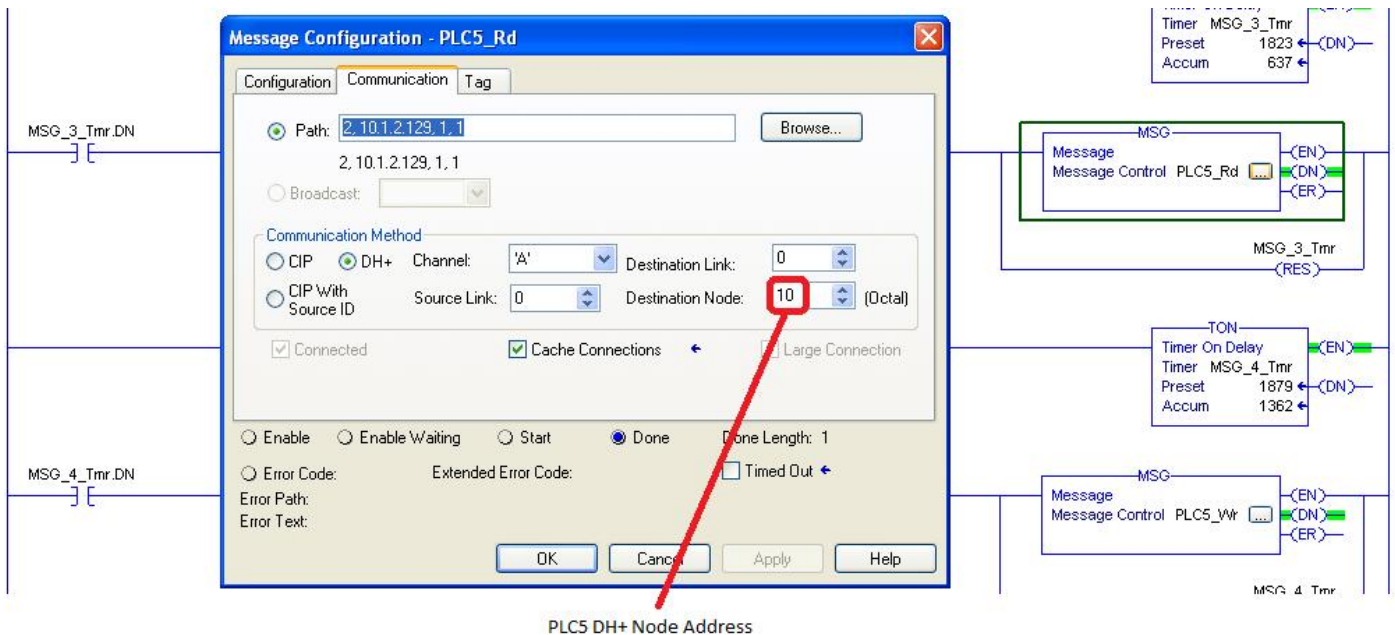


CompactLogix MSG samples to a PLC-5®

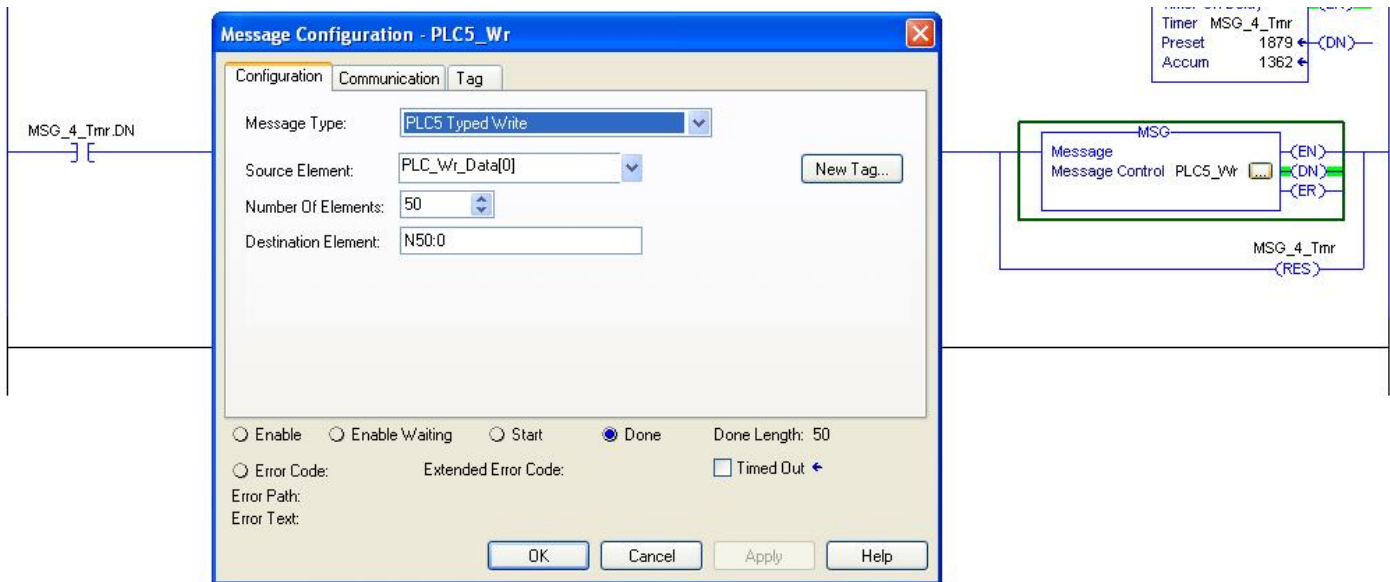
Read



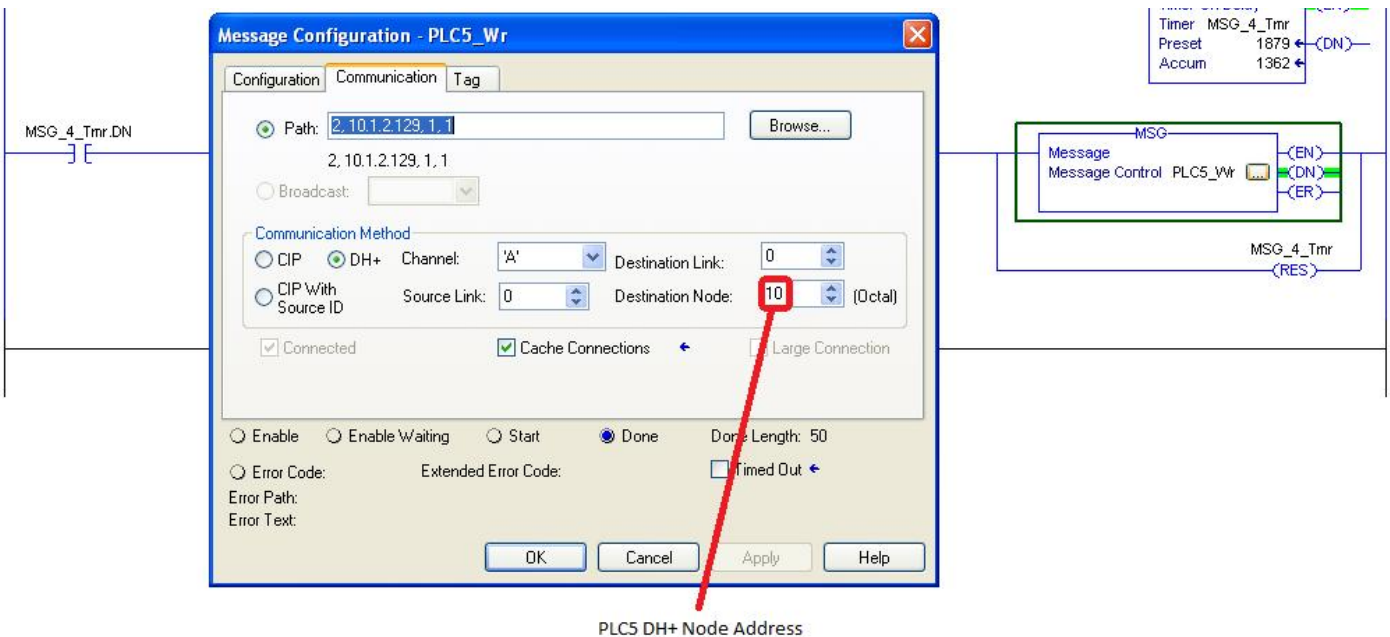
The IP Address shown in the Path statement is the IP Address of the AN-X2 Gateway



Write

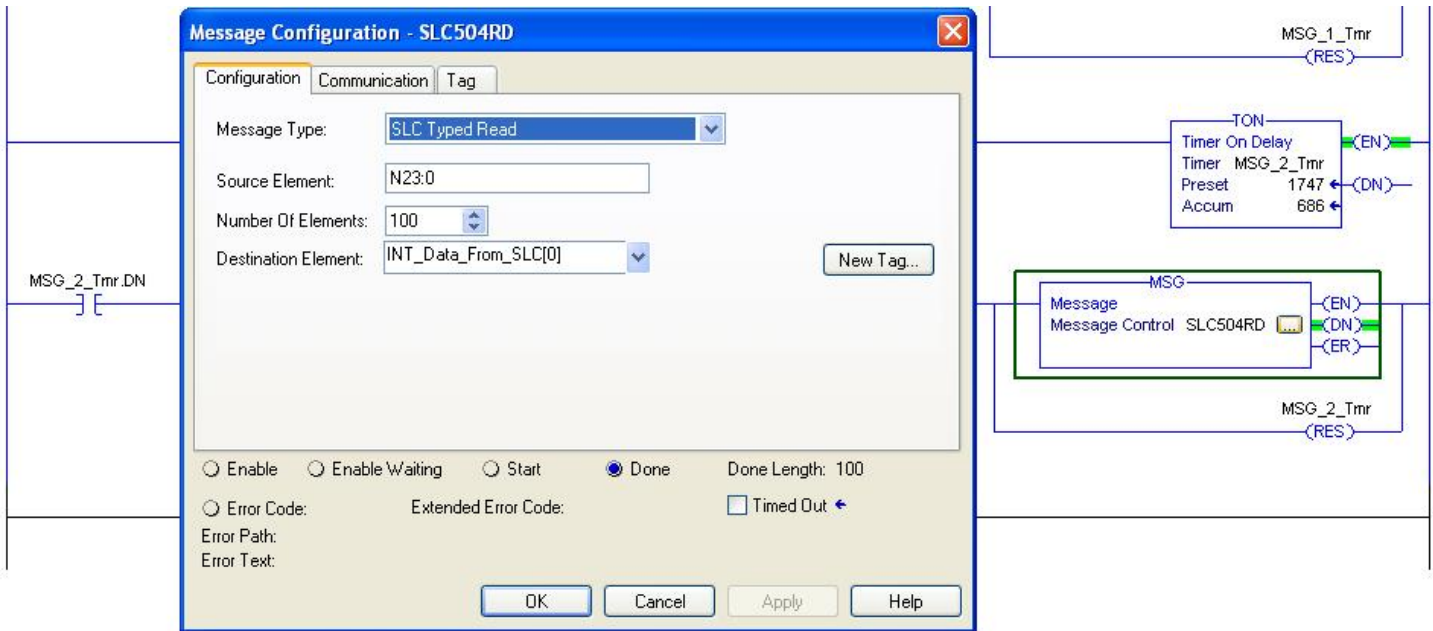


The IP Address shown in the Path statement is the IP Address of the AN-X2 Gateway

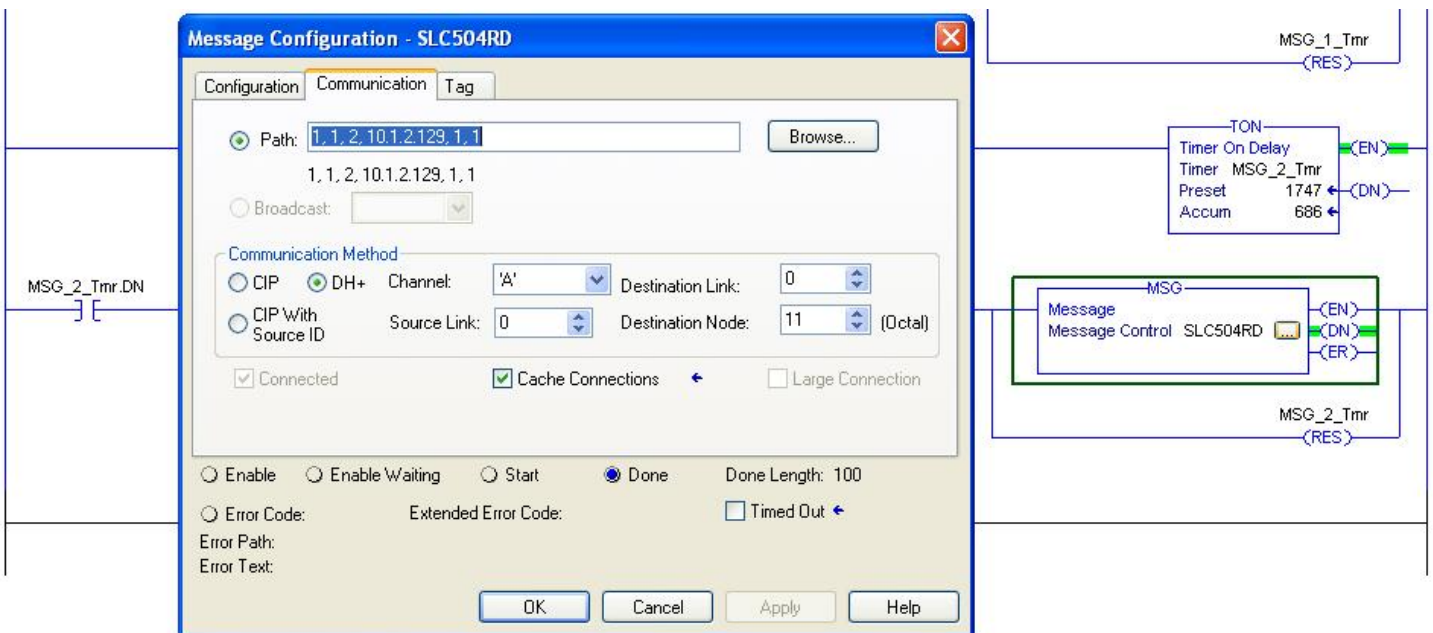


PLC5 DH+ Node Address

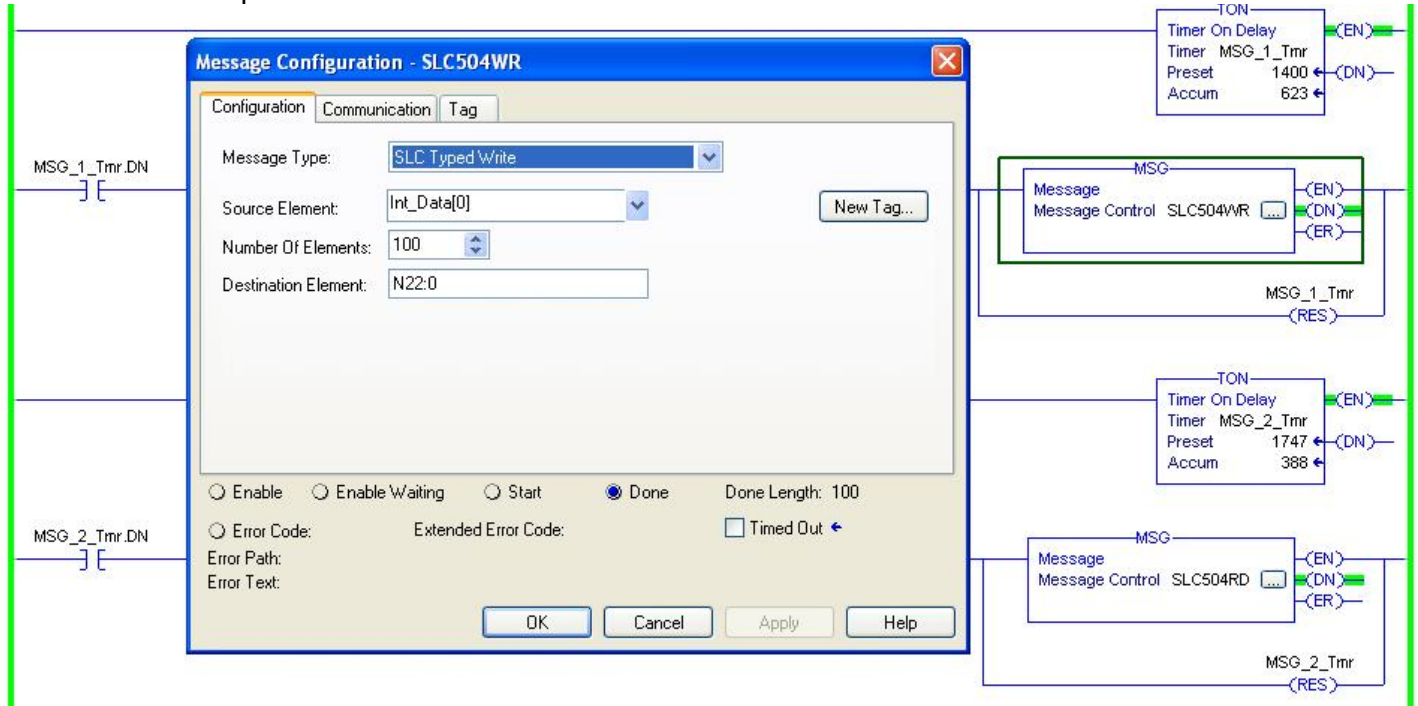
ControlLogix MSG Samples to a SLC5/04 Read



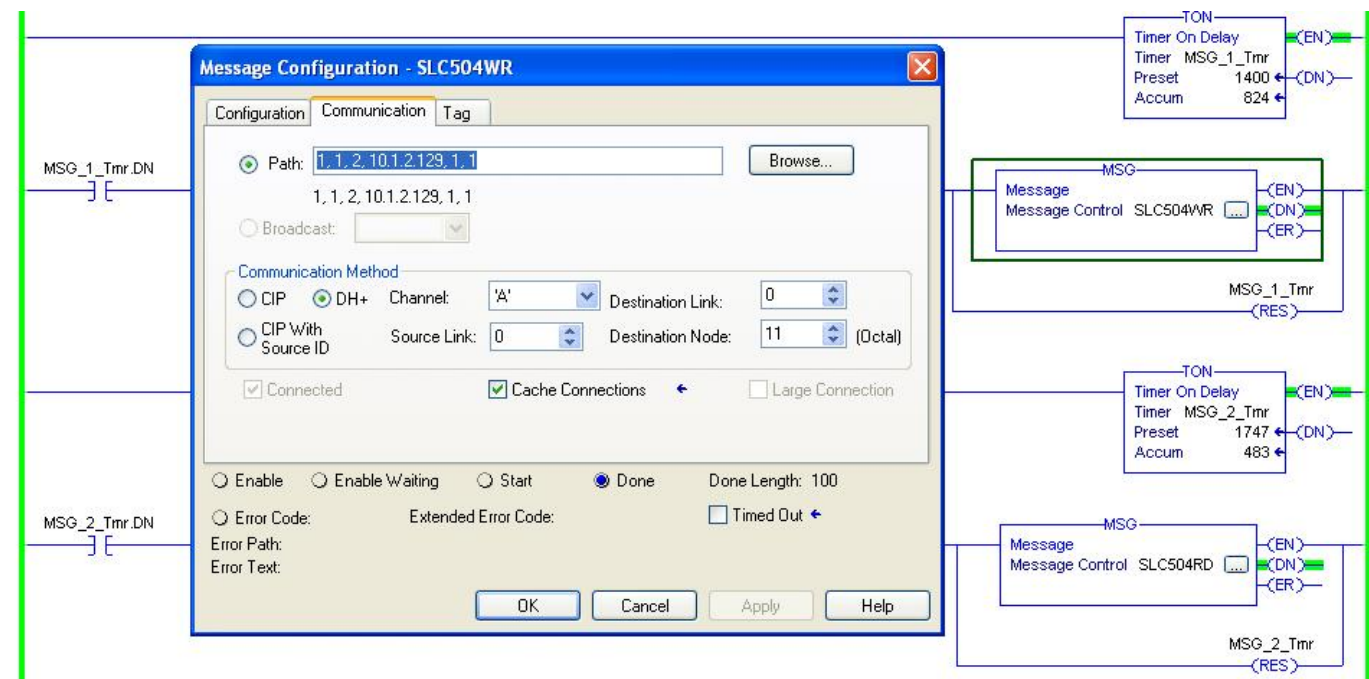
This sample assumes that a 1756-ENBT/ EN2T/EN3T module is in Slot 1 which is the second parameter listed in the path below. The IP Address is the IP Address of the AN-X2 Gateway.



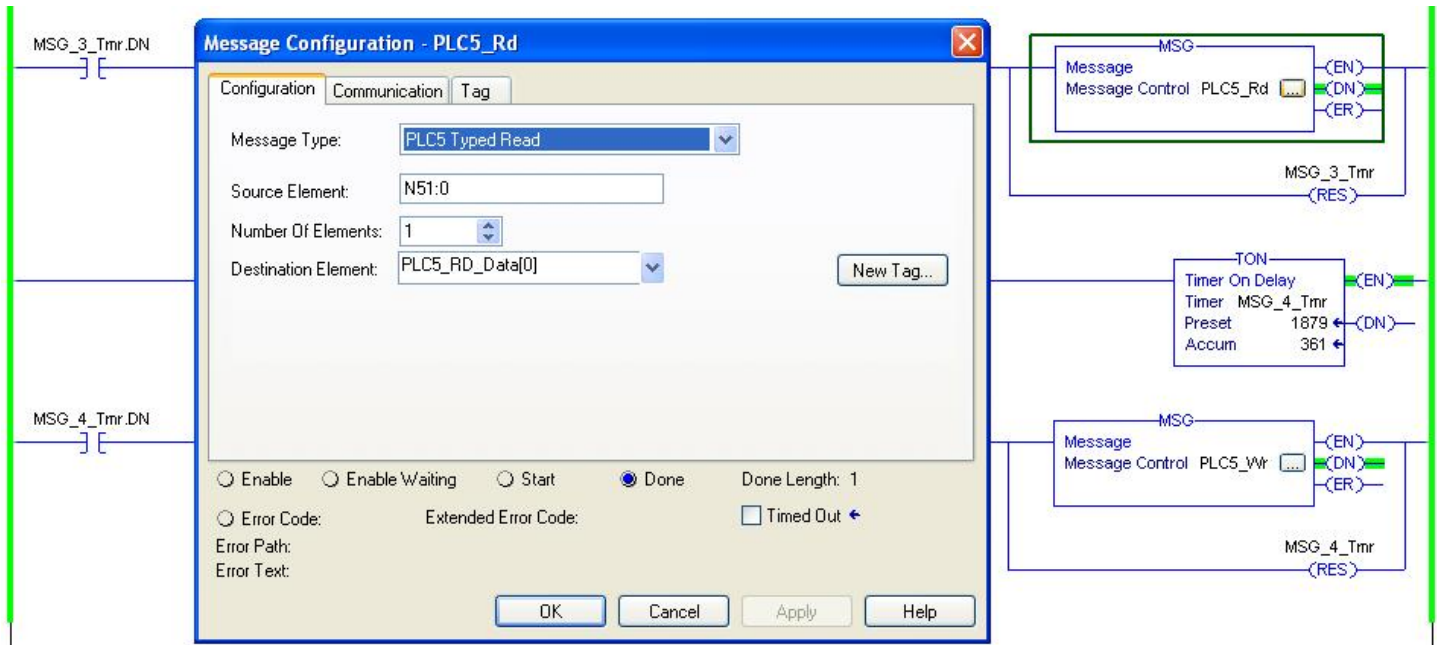
Write Example



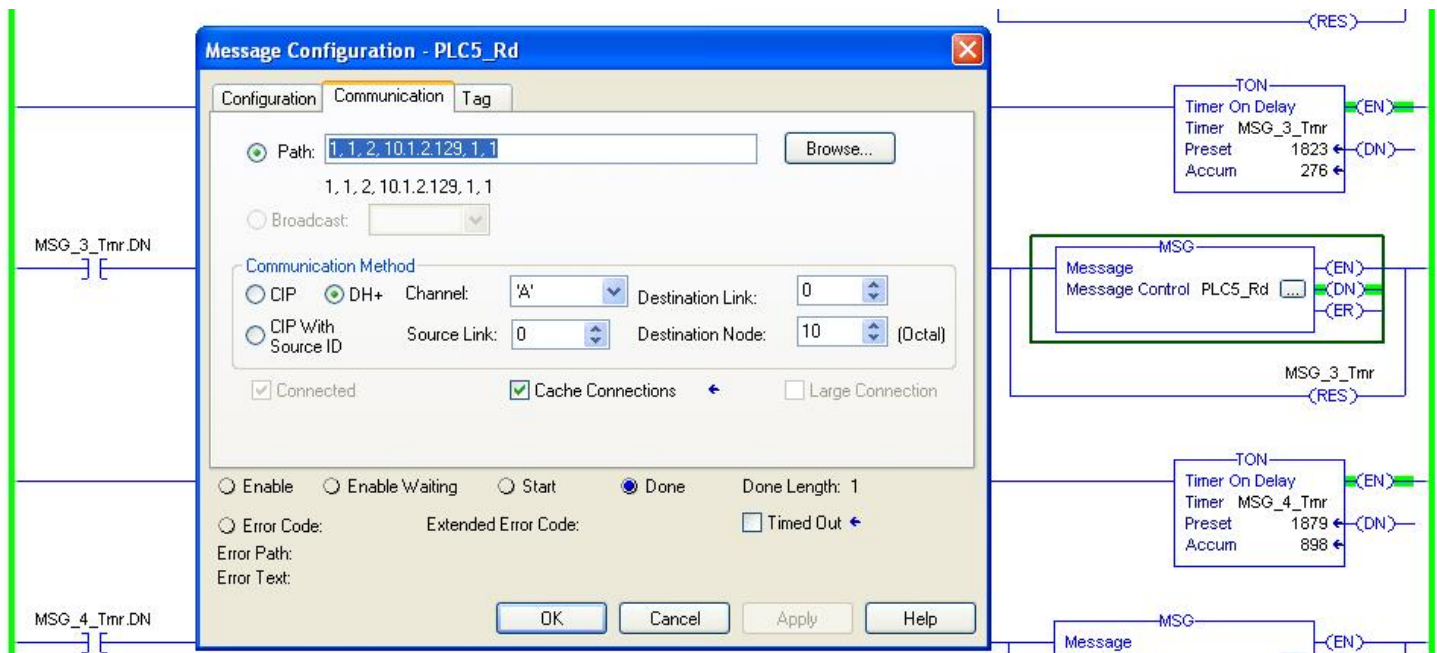
This sample assumes that a 1756-ENBT/ EN2T/EN3T module is in Slot 1 which is the second parameter listed in the path below. The IP Address is the IP Address of the AN-X2 Gateway.



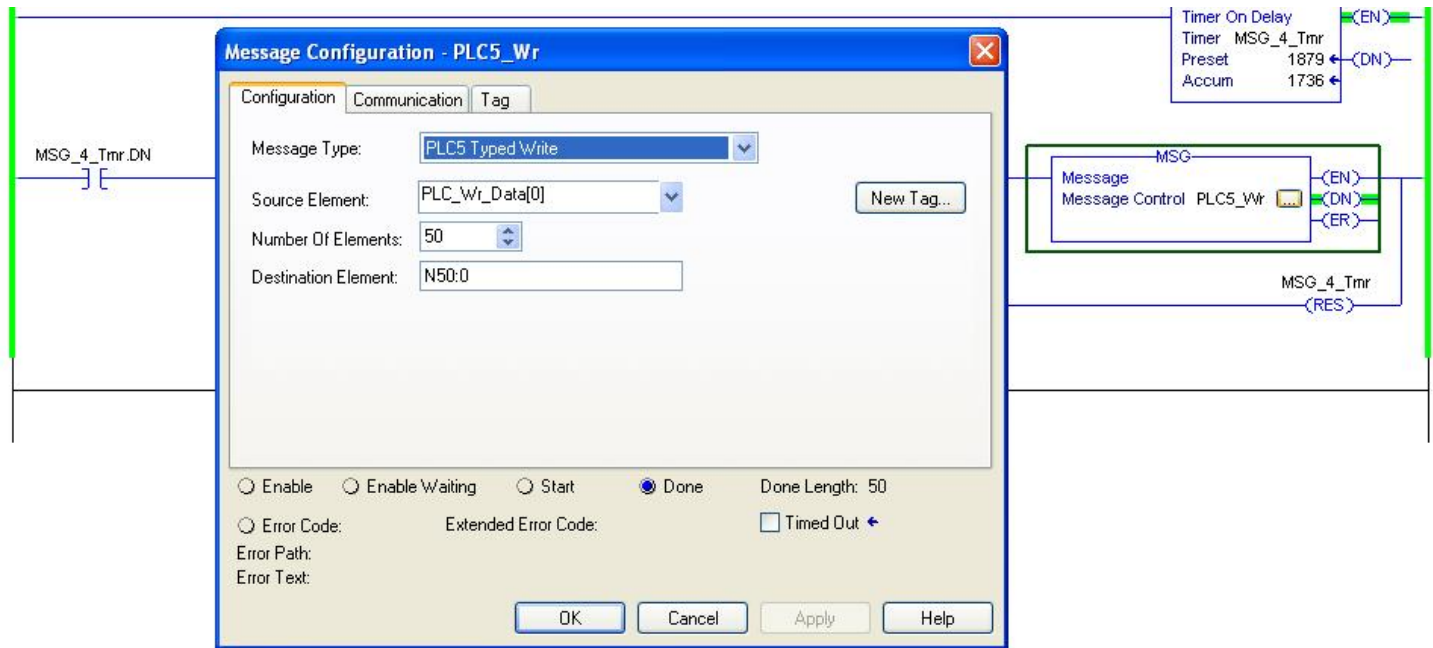
ControlLogix® MSG Samples to a PLC-5® Read



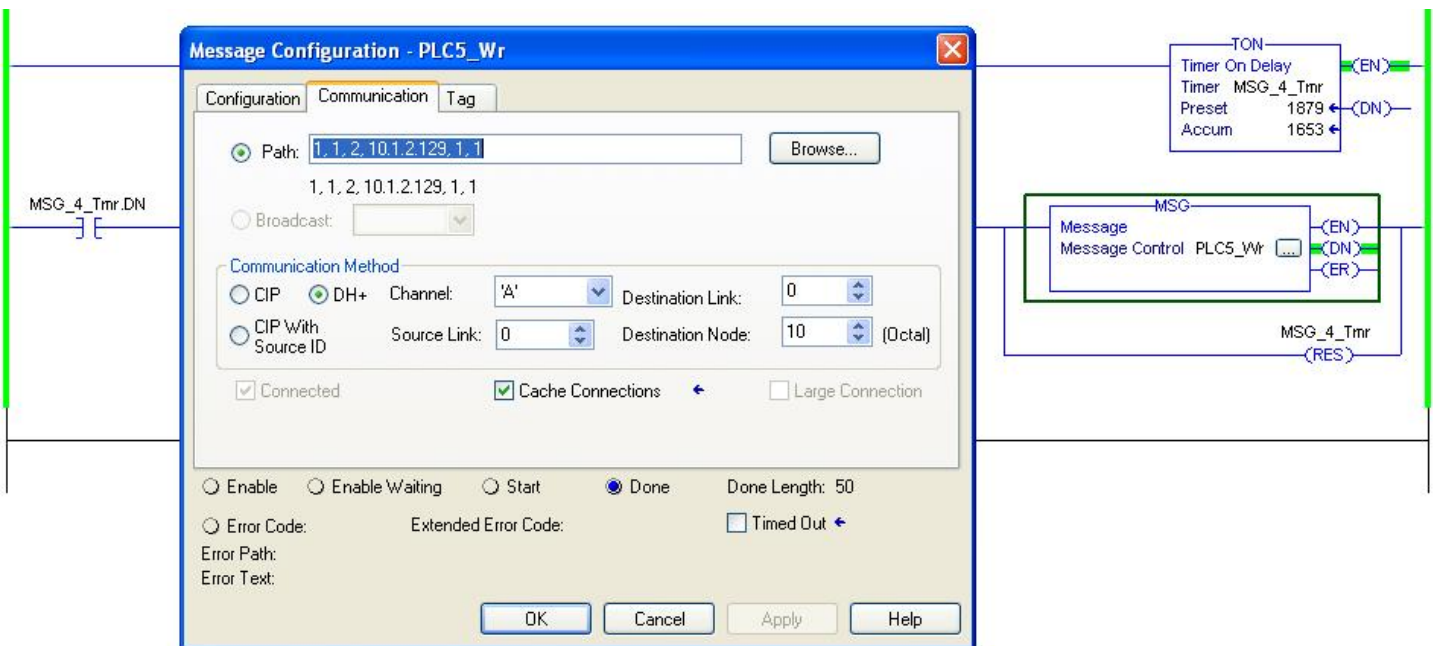
This sample assumes that a 1756-ENBT/ EN2T/EN3T module is in Slot 1 which is the second parameter listed in the path below. The IP Address is the IP Address of the AN-X2 Gateway.



Write

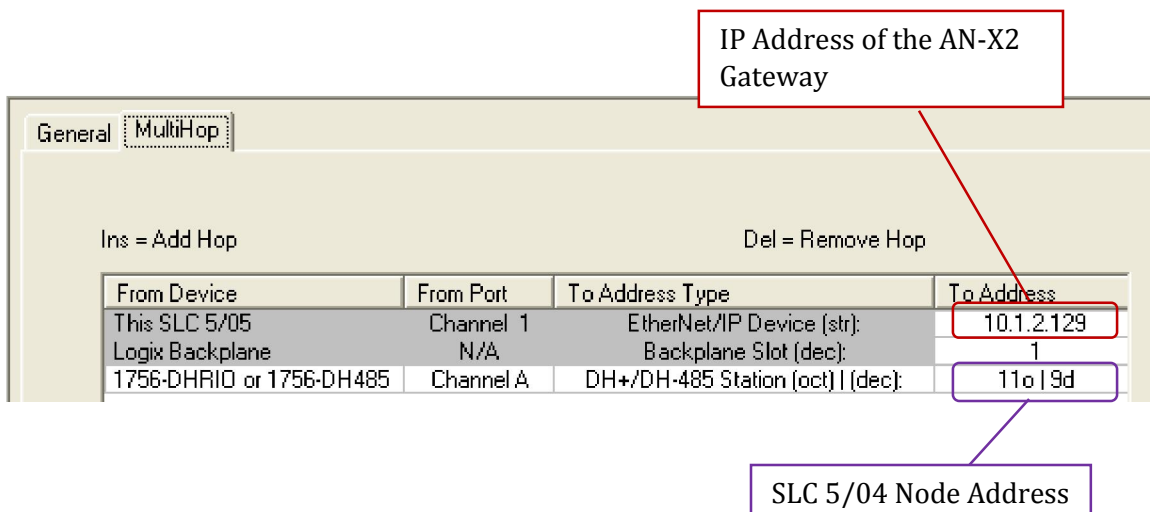
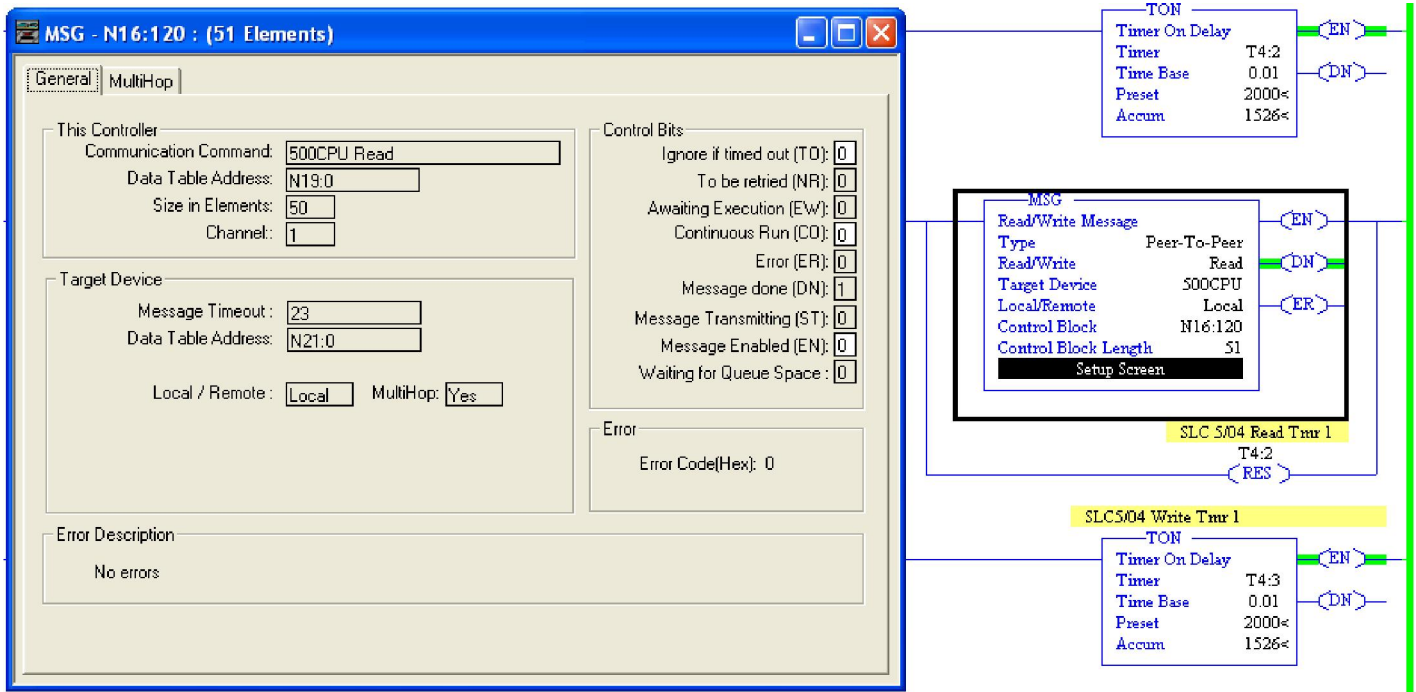


This sample assumes that a 1756-ENBT/ EN2T/EN3T module is in Slot 1 which is the second parameter listed in the path below. The IP Address is the IP Address of the AN-X2 Gateway.

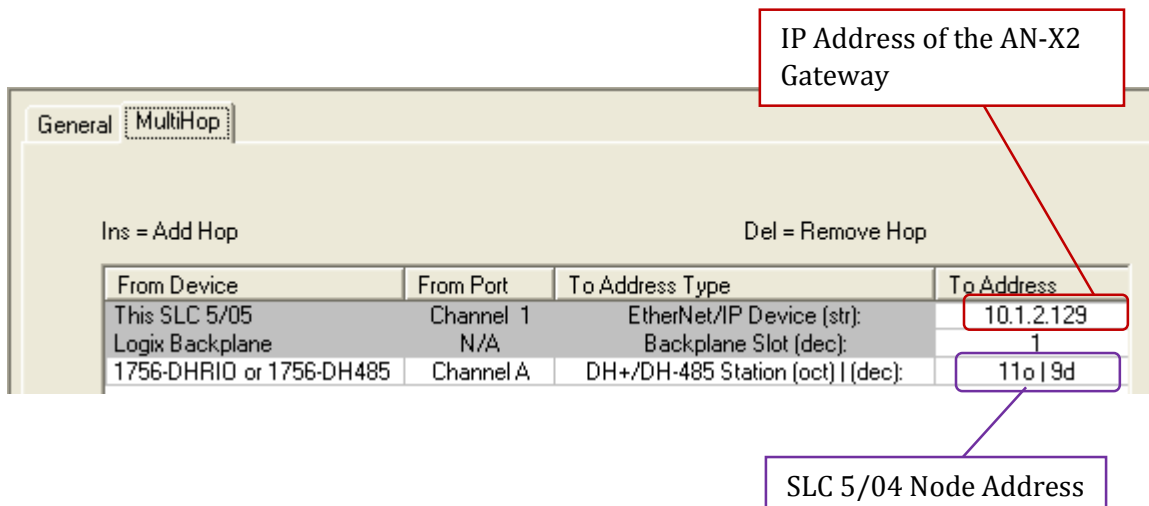
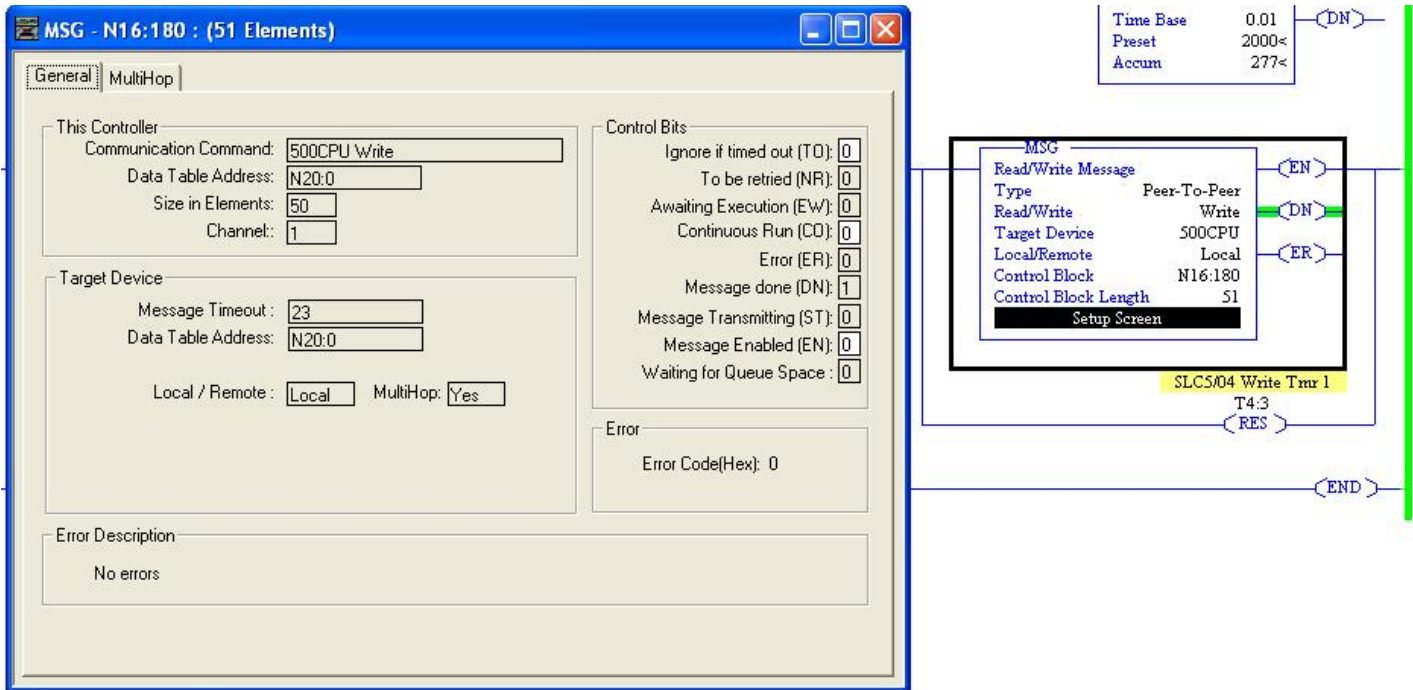


Message Instruction Samples from a SLC5/05 to a SLC5/04

Read Sample

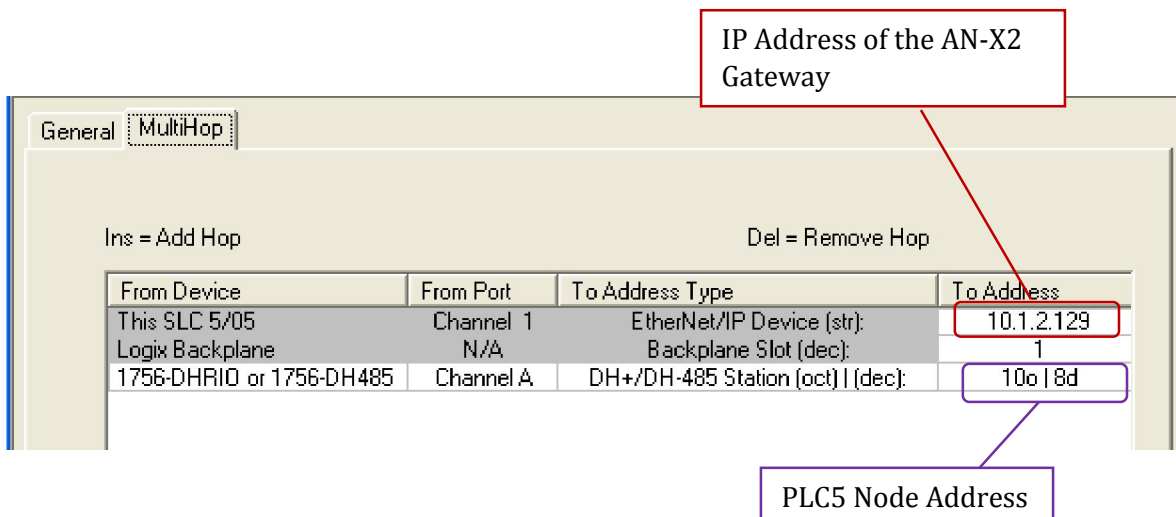
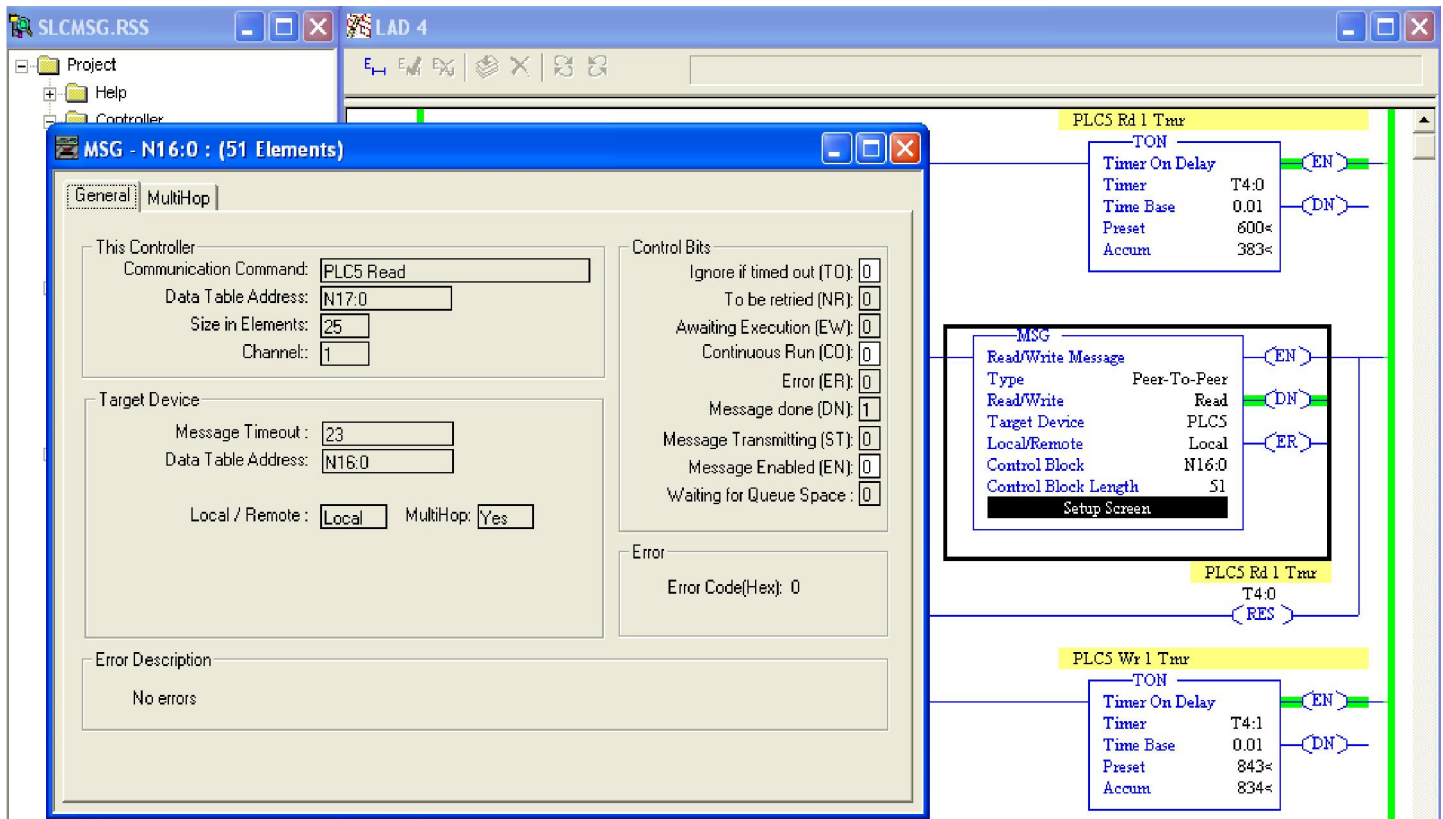


Write Sample

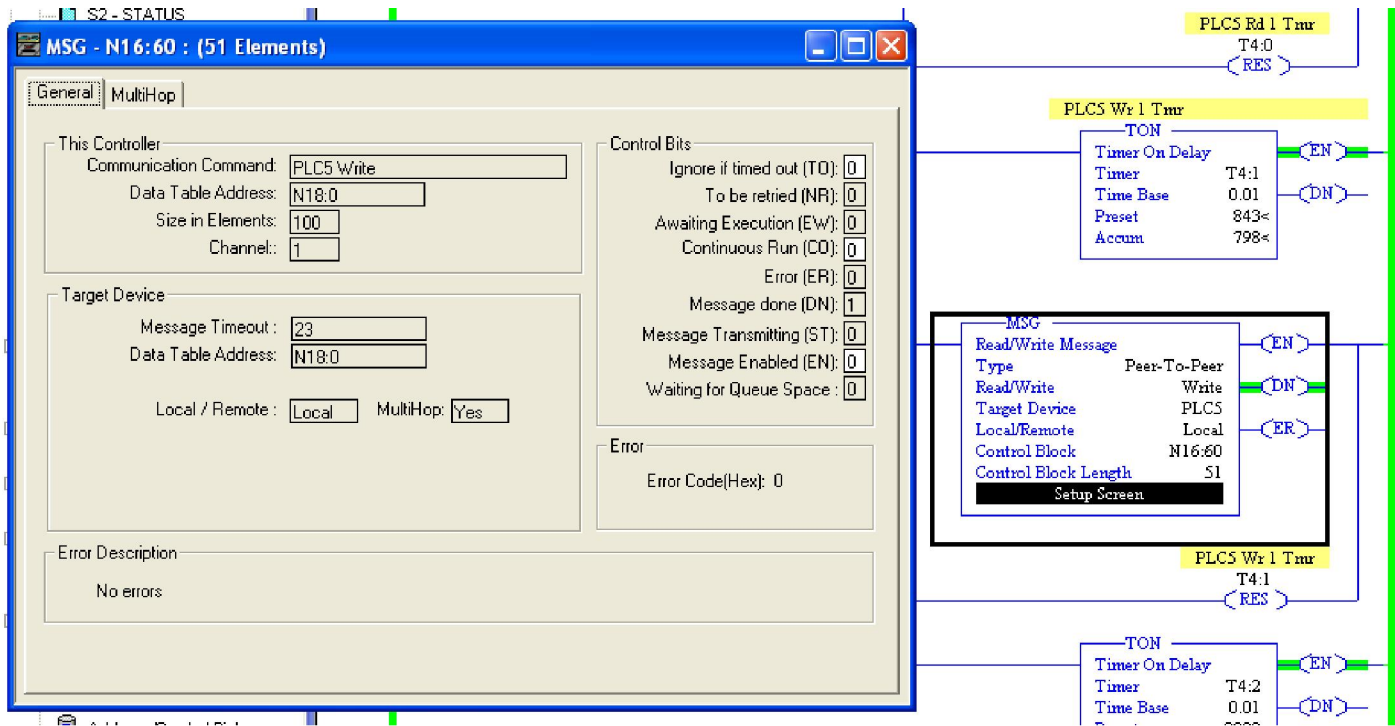


SLC5/05 PLC to a PLC-5®

Here is a sample Read MSG instruction in RSLogix 500



Sample Write MSG instruction in RSLogix 500



IP Address of the AN-X2
Gateway

General MultiHop			
Ins = Add Hop		Del = Remove Hop	
From Device	From Port	To Address Type	To Address
This SLC 5/05	Channel 1	EtherNet/IP Device (str):	10.1.2.129
Logix Backplane	N/A	Backplane Slot (dec):	1
1756-DHRI0 or 1756-DH485	Channel A	DH+/DH-485 Station (oct) (dec):	100 8d

PLC5 Node Address

Conclusion

This document has shown samples of various Processor to Processor Message instructions for use with the AN-X2-Ab-DHRIO gateway when running the Data Highway Plus firmware. If you have any additional questions please contact your regional support center listed below.

Asia Pacific

Malaysia Office

Phone: +603.7724.2080

asiapc@prosoft-technology.com

Languages spoken: Chinese, English

China Office

Phone: +86.21.5187.7337

asiapc@prosoft-technology.com

Languages spoken: Chinese, English

Europe

France Office

Phone: +33 (0)5.34.36.87.20

support.emea@prosoft-technology.com

Languages spoken: French, English

Middle East and Africa

Phone: +971.(0)4.214.6911

mea@prosoft-technology.com

Languages spoken: English, Hindi

North America

California and Wisconsin Offices

Phone: +1 661.716.5100

support@prosoft-technology.com

Languages spoken: English, Spanish

Latin America

Brazil Office

Phone: +55.11.5083.3776

brasil@prosoft-technology.com

Languages spoken: Portuguese, English

Mexico and Central America Office

Phone: +52.222.3.99.6565

soporte@prosoft-technology.com

Languages spoken: Spanish, English

Regional Office

Phone: +1.281.298.9109

latinam@prosoft-technology.com

Languages spoken: Spanish, English