

Technical Note



Migrating from an existing MVI69-PDPS to ILX69-PBS

Document Code: TN-ILX69PBS_Migrating from MVI69-PDPS_01-1906

Revision: 1

Applicable products include:

Converting from:

- **MVI69-PDPS**



Converting to:

- **ILX69-PBS**



How to Contact Us

Asia Pacific
Regional Office
+60.3.7941.2888
support.ap@prosoft-technology.com

North Asia
(China, Hong Kong)
+86.21.5187.7337
support.ap@prosoft-technology.com

Europe/Middle East/Africa
Regional Office
+33.(0)5.34.36.87.20
support.emea@prosoft-technology.com

Latin America
Regional Office
+52.222.264.1814
support.la@prosoft-technology.com

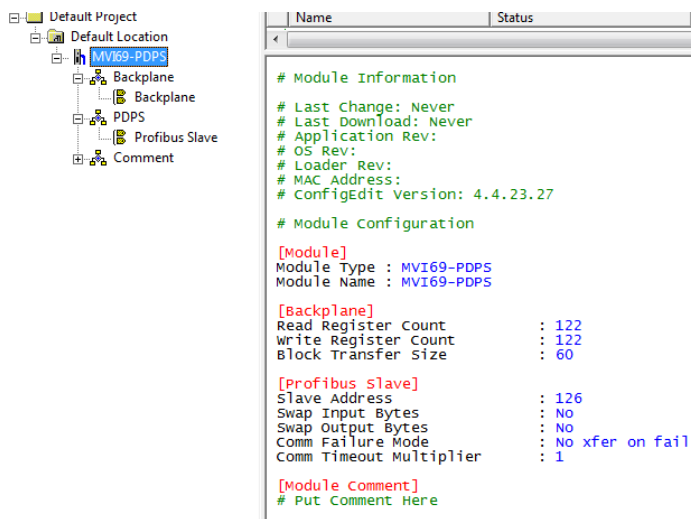
North America
Corporate Office
+1.661.716.5100
support@prosoft-technology.com

Migrating from an existing MVI69-PDPS to the new ILX69-PBS is a simple and straight-forward process. The main difference between the two is the AOI and GSD file for each.

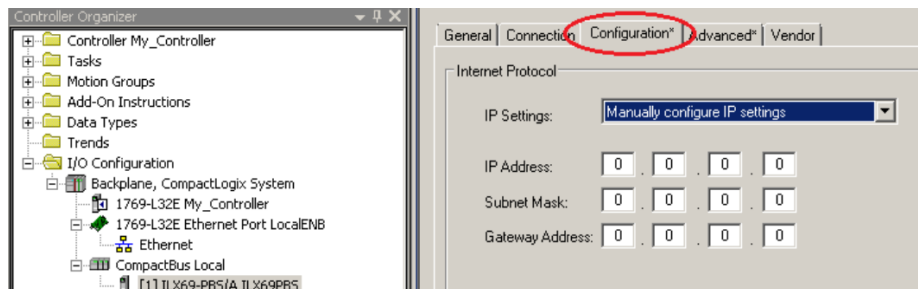
It is highly recommend to review the ILX69-PBS training video on ProSoft Technology's YouTube channel: <https://www.youtube.com/watch?v=GoI9Ix93YAc>

Migrating from the MVI69-PDPS to the ILX69-PBS

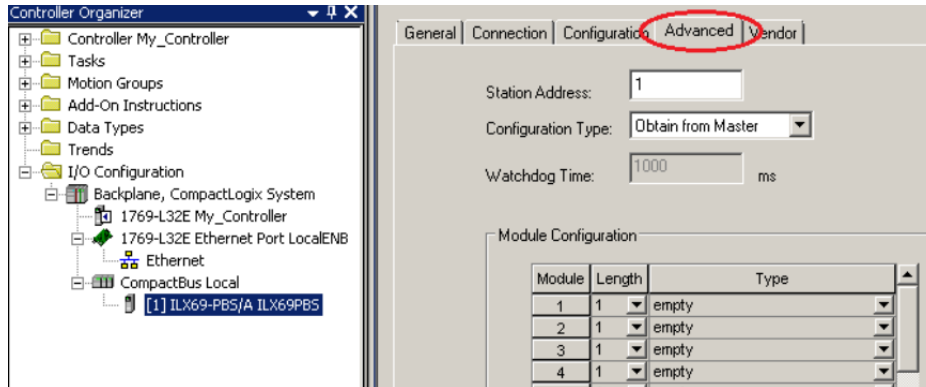
With the MVI69-PDPS, the backplane, Slave ID, and other configuration parameters are done in ProSoft Configuration Builder:



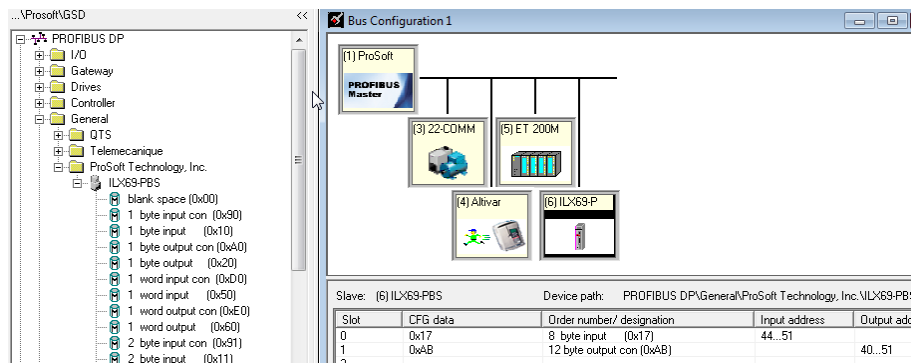
The ILX69-PBS is configured entirely in RSLogix/Studio 5000, and unlike the MVI69-PDPS, the ILX69-PBS has an Ethernet port that can be used for diagnostics. The IP address is configured using the AOP, which can be obtained from the ILX69-PBS's product page on www.prosoft-technology.com.



With the AOP, there is an “Advanced” tab that allows the user to define the cyclic data IO transfer between the PBS and the PROFIBUS Master. To use the ILX69-PBS in the same way you would use the MVI69-PDPS, the “Configuration Type” should be set to “Obtain from Master”.

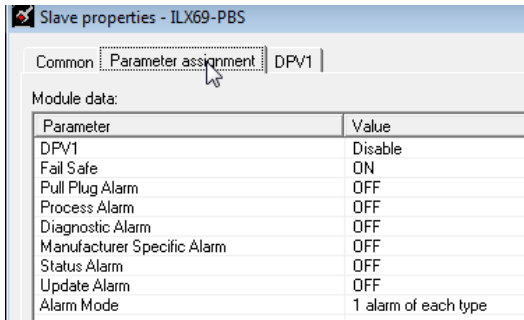


This simply means that you import the GSD in the Master’s configuration software, and define the slots, just like you would with most other PROFIBUS DP slaves.

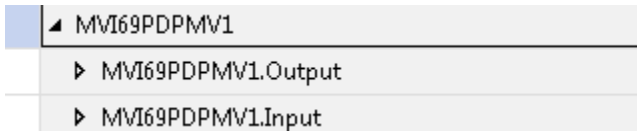


The **OBTAIN FROM LADDER** option is a unique option that allows the CompactLogix controller to “lock” the ILX69-PBS PROFIBUS configuration. Once this option is selected, you will manually configure the PROFIBUS I/O data in the Module Configuration section of the tab. The PROFIBUS Master’s configuration for this slave must match 100%, or communications will fail.

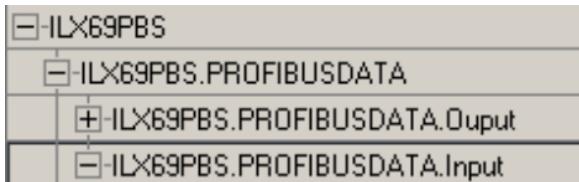
When configuring the PBS with the PROFIBUS configuration tool (Step7, TIA Portal, PCB, etc.), you can also modify several diagnostic parameters within the ILX69-PBS.



Importing the Add On Rung is identical to importing the Add On Rung for the MVI69-PDPS. With the MVI69-PDPS, the PROFIBUS IO data is located in:



With the ILX69-PBS, the PROFIBUS IO data is located in:



As stated earlier, the moving from a MVI69-PDPS to an ILX69-PBS is a pretty simple process, with a few minor differences. Other differences, such as obtaining diagnostic information is detailed within each respective user manual.